

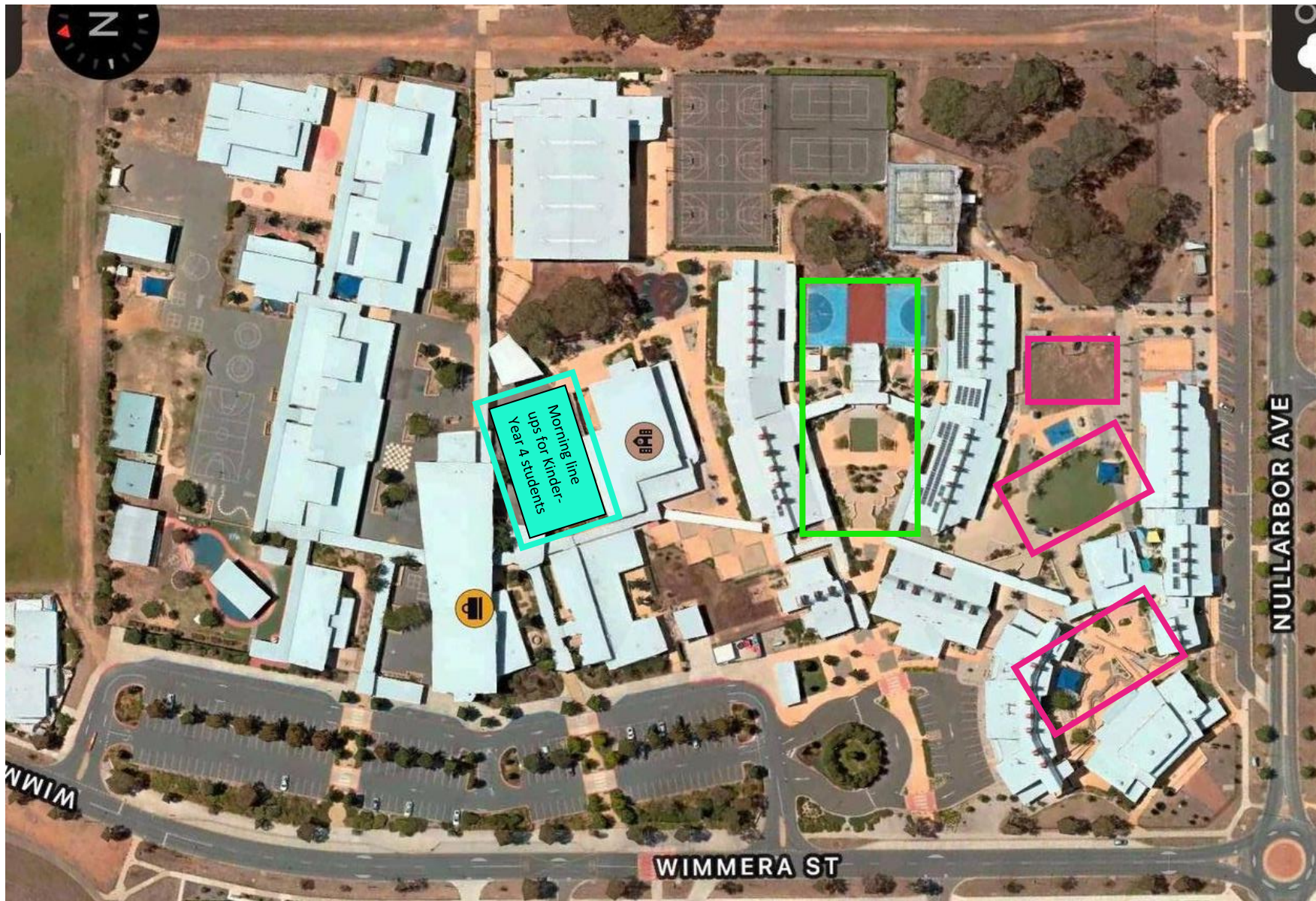
ENTRY and EXIT POINTS



| KEY | |
|--|-----------------------|
|  | Red = Preschool |
|  | Orange = Kindergarten |
|  | Yellow = Year 1/2 |
|  | Green = Year 3-6 |
|  | Pink = Year 7-10 |



ASSEMBLE LOCATION BETWEEN 8:30AM-8:50AM



KEY

- Aqua = Kinder – Year 4
- Green = Year 5/6
- Pink = Year 7-10

NOTE: This information is not relevant to preschool



Morning Line-up Numbers for Kinder – Year 4

| | | | |
|-----------|--|---|-----------------------------|
| 1 | Pre1-Teanne Fairfield-Smith/Lisa Buchanan (TERM 4) | 25 | Year 3/4 - Peta Craig |
| 2 | Pre2-Elsa Hendry (TERM 4) | 26 | Year 3/4 - S MacKenzie |
| 3 | Pre3-Sandy Home (TERM 4) | 27 | Year 3/4 - K. Watson |
| 4 | Kinder- Casey Hill | 28 | Year 3/4 - Menosha De Silva |
| 5 | Kinder- Amandeep Chahal | 29 | Year 3/4 - David Jess |
| 6 | Kinder-Tahlia Tait | 30 | Year 3/4 - C Dempster |
| 7 | Kinder-Justine Boreham | 31 | Year 3/4 - James Hoy |
| 8 | Kinder-Maggie Hansen | 32 | Year 3/4 - Ombre Perrin |
| 9 | Kinder-Shannen Stringfellow | 33 | Year 3/4 - Nicole French |
| 10 | Kinder-Tanya Sheppard | 34 | Year 3/4 - Katie Fleming |
| 11 | Year 1/2-Shane Newman | 35 | Year 3/4 - Sarah Hughes |
| 12 | Year 1/2-Kym Naylor | 36 | Year 3/4 - David Hicks |
| 13 | Year 1/2-Emma Bowden | <p style="text-align: center;">MORNING LINE UP PROCEDURE</p> <ul style="list-style-type: none"> • Students need to place school bags at line up area; refer to class number • Students can play in the central courtyard area until 8.55am • Students can play on fixed equipment in this area • Teachers will meet students at line up area at the commencement of each school day at 8.55am. • Parents are welcome to stay for morning announcements. | |
| 14 | Year 1/2-Muniza Abbas | | |
| 15 | Year 1/2-Jane Monoja | | |
| 16 | Year 1/2-Jayne Bleckendorf | | |
| 17 | Year 1/2-Jolene Hazle | | |
| 18 | Year 1/2-Tameeka Thorley | | |
| 19 | Year 1/2-Kristen Vellar | | |
| 20 | Year 1/2-Tom Parr | | |
| 21 | Year 1/2-Tammie Chui/Erin Res | | |
| 22 | Year 1/2-Rhianna Byrne | | |
| 23 | Year 1/2-Matt Bell | | |
| 24 | Year 1/2-Roz THOMSON | | |

End of day collection points for Kinder – Year 2

